

# EMP-3000VET

## COLOR DOPPLER VETERINARY ULTRASOUND SYSTEM

In nowadays veterinary practice, efficiency and productivity are most valued for practitioners. EMP-3000Vet can cover all examination needs in your practice; any species and every application, from small to large cats, dogs, bovine, ovine, equine, and to farm animals with cardiology and routine check package to standard everyday scanning.

### APPLICABLE TYPES










Canine	Feline	Ovine
Bovine	Equine	Swine



## CONFIGURATION LIST

 <p><b>1</b></p> <p><b>STANDARD CONFIGURATION</b>  <b>Main Unit</b>                  + High frequency Micro-convex                  + DICOM 3.0</p>	<p><b>2</b></p> <p><b>DISPLAY</b>                  21.5/23.8" High Resolution Medical Grade Monitor</p> 	<p><b>3</b></p> <p><b>CONNECTOR</b>                  4 Probe Connectors</p> 
--	--	---

## PROBE SELECTION

 <p>High Frequency Micro Convex (Standard Configuration)</p>	 <p>Micro Convex</p>	 <p>High Frequency Phased Array</p>	 <p>Phased Array</p>	 <p>Convex</p>
	 <p>(option)</p>	 <p>High Frequency Linear</p>	 <p>Rectal Linear</p>	 <p>Linear</p>

SHENZHEN EMPEROR ELECTRONIC TECHNOLOGY CO., LTD

ADD: No.1101 Tianliao Community Yutang Street, Guangming District, 518107 Shenzhen, PEOPLE'S REPUBLIC OF CHINA  
 Web: <https://www.china-emperor.com>



Please follow us "Emp Imaging"

## IMAGING MODES & TECHNOLOGY

### IMAGING MODE

B, 2B, 4B, M, BM, Anatomical M, Color M, PDI  
DPDI, CFM, PW, CW, Triplex Mode

MODEL

### 8 “E” TECHNOLOGY

ePF Pulse Inversion Harmonic Imaging

eTSI Tissue Specific Imaging

ePure Speckle Reduction Technology

ePure+ Premium Speckle Reduction Technology (Optional)

eSCI Spatial Compound Imaging

eFCI Frequency Compound Imaging

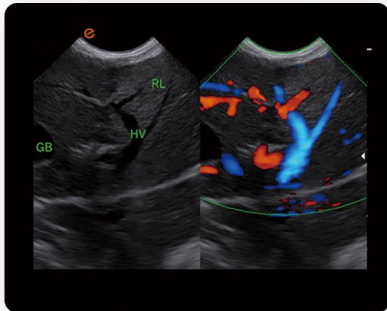
eSpeed Auto Image Optimization

eView Panoramic Imaging

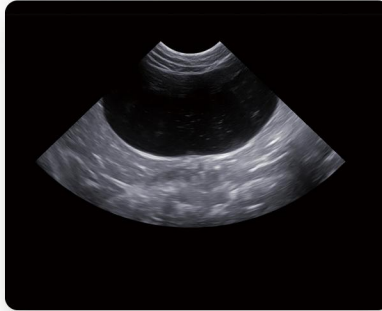
TECHNOLOGY

## CLINICAL IMAGE

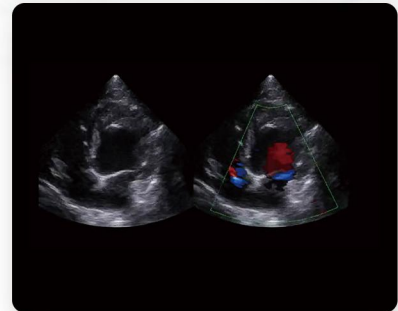
Splenic Blood Vessels



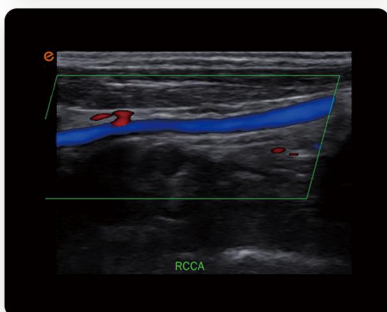
Bladder



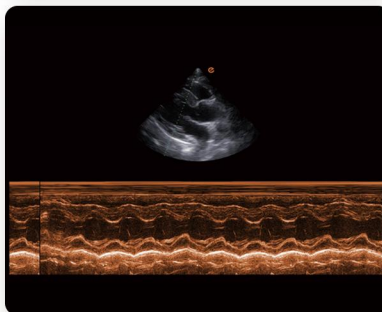
Heart Four Chamber Blood Flow



Right Common Carotid Artery



Left Ventricle of Heart



Pulmonary Regurgitation

